

Effect of different adhesive systems and silane application on shear bond strength of resin cement to indirect restorations

Makbule Heval Şahan¹, Cem Peşkersoy², Övül Kümbüloğlu¹, Murat Türkün²

Abstract

Objective: This study compared the influence of various adhesive systems and silane application on the adhesion of resin-based luting cement to lithium disilicate, indirect composite resin, and zirconia restorations.

Methods: Lithium disilicate (n=50), indirect composite resin (n=50), and zirconia (n=50) blocks were divided into five groups (n=10), according to the adhesive protocol applied as follows: 1. Optibond XTR, 2. silane + Optibond All in One, 3. One Coat 7 Universal, 4) Adper Scotchbond Multi-Purpose, and 5) Silane + Single Bond Universal. The blocks were bonded to a resin-based luting cement after surface treatments (silica coating and acid application). The bonded specimens were incubated in 37° C water for 24 hours and thermocycled for 5,000 cycles. The shear bond strength (SBS) was evaluated by a universal testing machine. The adhesion protocols for each type of restoration were compared by one-way ANOVA and Dunnett T3 test.

Results: There were significant differences in the bond strength of cement to indirect restorations between various adhesive protocols ($P<0.05$). In all types of restorations, the highest SBS was observed in group 5, which was silanized and bonded with Single Bond Universal. The bond strength of group 5 in lithium disilicate, indirect composite resin, and zirconia groups were 26.1 ± 4.9 MPa, 20.5 ± 5.7 MPa, and 15.4 ± 4.7 MPa, respectively.

Conclusions: It appears that the best adhesive protocol for bonding cement to lithium disilicate, indirect composite resin, and zirconia restorations is the use of silane and a universal adhesive containing silane (Single Bond Universal). (J Dent Mater Tech 2023;12(2): 104-110)

Keywords: Bond strength, Composite resin, Lithium disilicate, Silane, Zirconia

Introduction

The composition of restorative materials greatly influences the clinical effectiveness of indirect restorations (1). The chemical composition of the adhesive system and the pretreatment of the internal surface of the restoration influence the wetting capacity and bond durability (2, 3). Consequently, manufacturers have introduced a variety of primers or adhesives to enhance the bond between resin cement and indirect restorations (1, 4).

As a coupling agent, silane is a bifunctional molecule capable of bonding with silicon dioxide (SiO₂) and the organic matrix of resin cement (5, 6). Silane is applied

for surface pretreatment to facilitate the bonding of resin-based luting cement to substrate surfaces (7).

Universal adhesives have become increasingly popular among clinicians due to their fewer and simpler application steps, with a shorter application time (8). They can be utilized in the etch-and-rinse or self-etching modes (8). Some universal adhesives contain silane in their formulation, which may be effective in enhancing bond strength (9). However, there is limited evidence about the effect of Universal bonding systems on bond strength to indirect restorations. Furthermore, it is not well clear whether a separate silane application can improve the adhesion of bonding systems to glass ceramics, resin composites, and zirconia.

Self-adhesive cement containing 10-methacryloyloxydecyl dihydrogen phosphate (MDP) has been developed for zirconia restorations to enhance bonding. It has been demonstrated that shear bond strength (SBS) and compressive strength to zirconia are improved with MDP-containing self-adhesive resin cement (10).

The present study aimed to investigate the effects of various adhesive systems and silane application on the bond strength of resin-based luting cement to lithium

¹Department of Prosthodontics, School of Dentistry, Ege University, Izmir, Turkey.

²Department of Restorative Dentistry, School of Dentistry, Ege University, Izmir, Turkey.

Corresponding Author: Makbule Heval Şahan
Department of Prosthodontics, Faculty of Dentistry, Ege University, Izmir, Turkey.

Email: hevalsahan@gmail.com

Accepted: 17 June 2023. Submitted: 5 May 2023.

Materials and Methods

Sample preparation

The materials used in this study are listed in Table 1. Three groups of materials, including zirconia, lithium disilicate, and composite resin, were prepared as follows. Planar-shaped zirconia specimens (n=50), each with a surface area of 21 mm × 21 mm and a thickness of 10 mm, were procured from sintered disc-shaped zirconia blocks (AvaDent, Italy).

Composite blocks (n=50), matching the size of zirconia, were constructed from an indirect composite resin system (Tescera ATL II, Bisco Inc, Illinois, USA). A silicone impression mold (Coltene®, Whaledent, Altstätten, Switzerland) was utilized for each composite block, intending to replicate the zirconia blocks. Following the manufacturer's instructions, the specimens underwent light-curing paired with heat-curing via the reinforced microfill composite lightbox and heat box. After final polymerization, the surface of the composite resin blocks was polished using 50 µm aluminum oxide discs (Super-Snap Rainbow Kit, Shofu Corp., Tokyo, Japan), then rinsed with water.

Table 1. The product name (lot number), composition, and manufacturer of the materials used in this study

| Product (Lot No) | Composition | Manufacturer |
|---|--|--|
| Adper Scotchbond Multipurpose (N794505) | Bisphenol A glycol dimethacrylate (Bis-GMA), 2-hydroxyethyl methacrylate (HEMA) | 3M ESPE, St Paul, MN, USA |
| Single Bond Universal (613052) | Bisphenol A glycol dimethacrylate (Bis-GMA), 10-methacryloxydecyl dihydrogen Phosphate (MDP), Dimethacrylate resins, 2-hydroxyethyl methacrylate (HEMA), Vitrebond copolymer, Silane, Ethanol, Water | 3M Deutschland GmbH, Neuss, Germany |
| Silane Primer (5442600) | 80-85% Ethyl alcohol | Kerr, Orange, CA, USA |
| Optibond XTR Adhesive | Bisphenol A glycol dimethacrylate (Bis-GMA), 2-hydroxyethyl Methacrylate (HEMA), Tri-functional monomer, Ethanol, Photoinitiator, Barium glass filler, nano-filler. Fluoride-containing filler | Kerr, Orange, CA, USA |
| Optibond All in One (5918660) | Hexafluoroglutaric anhydrideglycerodimethacrylate, Glycerol phosphate dimethacrylate, Water, Butylhydroxytoluene, Ethanol, 2 Ethylhexyl – 4 dimethylamino dimethacrylate, Silica dioxide (SiO ₂), Barium aluminoborosilicate, sodium hexafluorosilicate. | Kerr, Orange, CA, USA |
| One Coat 7 Universal | 2-hydroxyethyl Methacrylate, Methacrylate modified polyacrylic acid, Urethanedimeth acrylate, Glycerol dimethacrylate, Amorph silicic acid, Water (5%), initiators and stabilizers | Coltene Whaledent, Switzerland |
| Panavia SA Plus Automix (5L0096) | Silanated colloidal silica filler, Silanated barium, Glass filler, Peroxide, dl-Camphor-quinone, Hydrophobic aliphatic dimetacrylate/aromatic, Dimetacrylate, Catalysis | Kuraray Europe GmbH Germany |
| Tescera ATL | Reinforced microfill composite (Body) Urethane dimethacrylate (UDMA) (< 15%), glass filler (< 80%), amorphous silica (< 25%) | Bisco Dental Product Asia Ltd., Seoul, Korea |
| Hydrofluoric Acid 9.5% (1400000180) | | Bisco Inc, Schaumburg, IL, USA |

Lithium disilicate blocks (e.max CAD, Ivoclar Vivadent, Amherst, NY, USA) in their bisque form were sectioned into rectangular shapes by a low-speed cutting device (Isomet, Buehler Ltd, Lake Bluff, IL, USA). Afterward, they were sintered as per the manufacturer's instructions. Each ceramic was embedded in an autopolymerizing acrylic resin block (Paladur; Heraeus Kulzer, Armonk, NY) in a silicone impression mold to mimic the size of zirconia blocks. The specimens were then ultrasonically cleaned in distilled water for 10 min, then dried using compressed air.

A tribochemical silica coating was applied to all indirect restoration specimens using an intraoral sandblaster (Miniblaster, Deldent Ltd, Israel) with 30 μm particles (Cojet, 3M ESPE, St. Paul, MN, USA) from a distance of 10 mm for 15 seconds at 0.3 MPa air pressure. After that, ceramic specimens received an application of 9.5% hydrofluoric acid (Porcelain Etchant, Bisco, Schaumburg, IL, USA). A droplet of etchant was distributed evenly across the bonding surface of the ceramic for 60 seconds using a micro brush. The surface was cleaned with water for 20 seconds and dried with compressed air for 15 seconds.

After undergoing surface treatments, the zirconia, lithium disilicate ceramic, and composite resin specimens were categorized into five subgroups (n=10) based on the adhesion protocol applied:

- 1) Optibond XTR
- 2) Silane + Optibond All in One
- 3) One Coat 7 Universal
- 4) Adper Scotchbond Multi-Purpose
- 5) Silane + Single Bond Universal

Plexiglass tubes with an inner diameter of 3.2 mm and a height of 3 mm were subsequently affixed to the specimens and filled with resin cement (Panavia SA Plus Automix, Kuraray Europe GmbH, Germany). The resin-based luting cement was then light-cured from two opposing sides for 40 seconds (BlueLEX LD-105, Monitex Ind. Co., Taipei, Taiwan). The specimens were subsequently incubated in distilled water at 37°C for 24 hours, then thermocycled for 5,000 cycles between 5°C and 55°C water baths, with each cycle lasting 15 seconds.

Shear bond strength (SBS) test

The plastic tube was removed for the shear bond test, and the specimens were fixed onto a steel fixture in a universal testing machine (Instron 5565, Canton, MA, USA). A sharpened stylus applied a shear load to the side of the cement cylinder until failure, moving at a

crosshead speed of 1 mm/min. The shear bond strength (SBS) values were calculated in MPa by dividing the failure load (N) by the bonding area (mm^2).

Failure mode analysis

In the failure mode analysis, two specimens from each group were randomly selected, sputter-coated with gold, and then observed under a scanning electron microscope (SEM; Zeiss Evo LS 10, Germany) at magnifications ranging from 1000 to 5000 to visualize the type of failure following various treatments. The failure mode was classified as one of three types: adhesive failure at the ceramic/cement interface, cohesive failure, or a combination of both.

Statistical Analysis

The data were analyzed using SPSS version 22 (IBM; Armonk, NY, USA). The data were normally distributed according to the Kolmogorov-Smirnov test ($P > 0.05$). The adhesion protocols for each type of restoration were compared by one-way analysis of variance (ANOVA), followed by the post hoc Dunnett T3 test for multiple comparisons. A significance level of 0.05 was established.

Results

Table 2 presents the SBS values of resin cement to the zirconia samples prepared by different adhesive protocols. The highest SBS was observed after using silane + Single Bond Universal (group 5). ANOVA showed a significant difference in SBS between the different groups in the zirconia substrate ($P = 0.03$; Table 2). Further analysis with post hoc Dunnett T3 test revealed that bonding with Optibond XTR (12.18 ± 2.90 MPa), Adper Scotchbond Multi-Purpose (12.27 ± 7.08 MPa), and silane + Single Bond Universal (15.38 ± 4.67 MPa) provided comparable bond strength values ($P > 0.05$; Table 2), which were significantly higher than that of the other zirconia groups ($P < 0.05$; Table 2).

The SBS values of resin cement to lithium disilicate after different adhesive protocols are presented in Table 3. There was a significant difference in bond strength between the groups in the lithium disilicate substrate ($P = 0.001$; Table 3). According to pairwise comparisons, SBS was significantly greater in samples treated by silane + Single Bond Universal (26.08 ± 4.86 MPa), as compared to the other groups ($P < 0.05$; Table 3).

ANOVA displayed a significant difference in SBS of resin cement to indirect composite resin among different

Table 2: Comparison of shear bond strength (MPa) values of resin cement to zirconia samples prepared by different adhesive protocols

| Adhesive | Mean± SD | Minimum | Maximum |
|--------------------------------|---------------------------|---------|---------|
| Optibond XTR | 12.18 ± 2.90 ^c | 8.49 | 17.45 |
| Silane + Optibond All in One | 6.39 ± 2.15 ^a | 2.52 | 10.45 |
| One Coat 7 Universal | 8.67 ± 2.97 ^b | 5.18 | 15.98 |
| Adper Scotchbond Multi-Purpose | 12.27 ± 7.08 ^c | 7.04 | 31.85 |
| Silane + Single Bond Universal | 15.38 ± 4.67 ^c | 7.96 | 22.51 |
| P-value | 0.03 | | |

*Different lowercase letters represent a significant difference between the groups at P<0.05., SD: Standard deviation

Table 3: Comparison of shear bond strength (MPa) values of resin cement to lithium disilicate samples prepared by different adhesive protocols

| Adhesive | Mean± SD | Minimum | Maximum |
|--------------------------------|---------------------------|---------|---------|
| Optibond XTR | 10.69 ± 3.93 ^a | 5.65 | 16.77 |
| Silane + Optibond All in One | 12.90 ± 3.41 ^a | 8.77 | 17.87 |
| One Coat 7 Universal | 10.51 ± 3.42 ^a | 4.85 | 15.18 |
| Adper Scotchbond Multi-Purpose | 11.00 ± 3.76 ^a | 4.91 | 16.42 |
| Silane + Single Bond Universal | 26.08 ± 4.86 ^b | 19.61 | 35.33 |
| P-value | 0.001 | | |

*Different lowercase letters represent a significant difference between the groups at P<0.05., SD: Standard deviation

Table 4: Comparison of shear bond strength (MPa) values of resin cement to indirect composite resin samples prepared by different adhesive protocols

| Adhesive | Mean± SD | Minimum | Maximum |
|--------------------------------|-------------------------|---------|---------|
| Optibond XTR | 15.84±4.17 ^a | 10.98 | 24.57 |
| Silane + Optibond All in One | 16.90±4.17 ^a | 10.31 | 23.35 |
| One Coat 7 Universal | 14.03±1.94 ^a | 11.58 | 18.64 |
| Adper Scotchbond Multi-Purpose | 13.41±6.60 ^a | 5.84 | 24.47 |
| Silane + Single Bond Universal | 20.55±5.70 ^b | 9.91 | 31.00 |
| P-value | 0.02 | | |

*Different lowercase letters represent a significant difference between the groups at P<0.05., SD: Standard deviation

adhesive protocols (P=0.02; Table 4). The result of multiple comparisons by the Dunnett T3 test revealed that the application of silane + Single Bond Universal (group 5) led to a significantly higher bond strength (20.55±5.70 MPa), as compared to the other adhesive groups (P<0.05; Table 4).

The failure mode analysis revealed a cohesive type of failure in groups with higher bond strength (Figures 1 and 2), whereas, in samples with lower bond strength, adhesive failure was more frequently observed.

Discussion

The present study investigated the influence of various adhesive protocols and silane application on the bond strength of resin cement to zirconia, lithium disilicate, and indirect resin composite substrates. Enhancing the bond strength of indirect ceramic restorations involves improving mechanical interlocking by sandblasting or

the use of chemical enhancement methods such as application of silane and different adhesive systems (11,12). Establishing a desirable mechanical bonding via sandblasting can be challenging due to variables like air blasting pressure, application time, particle size, the sectional form of blasted particles, and the material's surface properties (7, 13, 14). Therefore, incorporating an additional silanization step can strengthen chemical bonding to the exposed hydroxyl groups and enhance surface wettability, thereby increasing the bond strength (15). Furthermore, silane impregnation in universal adhesive simplifies the protocols and reduces bonding step failures (16).

In the present study, the application of additional silane alongside the silane-containing universal adhesive system (group 5) substantially increased the bond strength of resin cement to all types of indirect restorations. In lithium disilicate and indirect composite

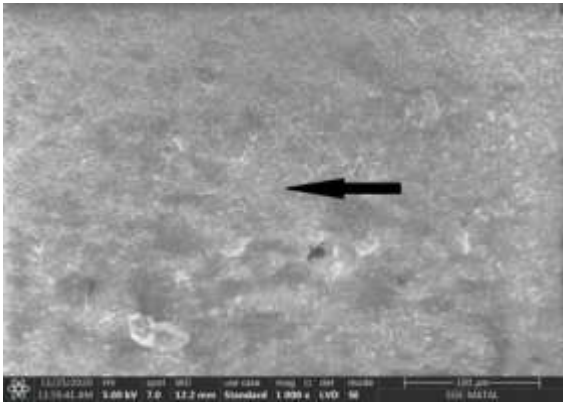


Figure 1. An SEM image of lithium disilicate bonded with silane + Single Bond Universal. Resin cement is widely noted as indicated with the arrow.

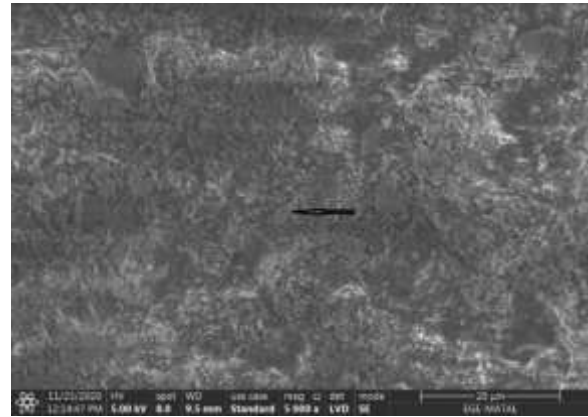


Figure 2. An SEM image of zirconium bonded with silane + Single Bond Universal.

resin samples, bond strength was significantly greater in group 5, as compared to the other groups (26.08 ± 4.86 MPa for lithium disilicate, and 20.55 ± 5.70 MPa for indirect composite resin). In zirconia substrate, the use of silane + Single Bond Universal provided the highest bond strength (15.38 ± 4.67 MPa), but the difference with Optibond XTR (12.18 ± 2.90 MPa), and Adper Scotchbond Multi-Purpose (12.27 ± 7.08 MPa) was not statistically significant. This outcome can be rationalized by the instability of silane-zirconia conjunctions in the acidic pH (2.3–2.7) of most MDP-based universal adhesives. A study by Koko et al. (17) revealed that silane concentrations exceeding a predetermined threshold significantly weakened the bonding performance of MDP on zirconia ceramics. This degradation was attributed to the dilution of MDP content by silane (18).

We preferred to use a separate silane application step before the use of silane-containing Single Bond Universal. Fourier-transform infrared spectroscopy (FTIR) and nuclear magnetic resonance (NMR) have validated the dehydration self-condensation reaction of silanol groups in silanes present in universal adhesives (19). Our findings align with those of Zaghoul et al. (20) and Kalavacharla et al. (21), who reported that both silane-containing universal adhesive and additional silane application substantially improved the SBS values in lithium disilicate and composite resins. Almaskin et al. (22) also noted that isolated silane application significantly strengthened the bond of lithium silicate to the cement compared to the silane-containing universal adhesive. This might be attributed to the fact that the adhesive bottle contains stored prehydrolyzed silane with a short shelf-life and reduced efficacy. The silane in the adhesives might be overly simplistic or insufficient to generate an effective siloxane network and yield the same effect as the silane primer. Therefore, additional silane

pretreatment can improve the bonding of indirect restorations with silane-containing adhesives. According to Yao et al. (23), the bond strength of silane-containing universal adhesive did not differ from silane-free adhesives if no separate silane is employed.

There is limited evidence regarding the SBS of indirect resin composite with silane-containing universal adhesive, thus comparing the results of this study with other studies is challenging. In vitro, studies have cited a bond strength of 15–25 MPa as the optimal value for indirect composite resin (24, 25). In our study, most indirect composite resin specimens bonded with adhesive systems with or without silane application exhibited a mean bond strength within the optimal range, which is consistent with previous studies (24, 25). However, some reports argue that extra silane application is less effective than anticipated, as silica permeation is insufficient due to the high density of the substrate (26). Jusue-Esparza et al. (27) reported that silane coupling agents did not influence the adhesion process of the aged resin. Silane interaction with the composite resin's surface depends on silicon availability (28). In the present study, air-particle abrasion with SiO₂ (CoJet) was used for all groups to expose silicon by removing the material's surface organic matrix.

Zirconia ceramic is a unique material resistant to acids and does not contain silica. Silica coating is a strategy to strengthen the bond between the resin and different surfaces, especially zirconia. It benefits from air abrasion to create a tribochemical effect, depositing a molecular layer of SiO₂ on the surface. The surface is then treated with a silane coating to increase its chemical reactivity towards the resin (29, 30, 31). Özdemir et al. (32) showed that the CoJet system amplified the bond of zirconia specimens to resin cement. Moreover, in their study, silane and bonding agent coupled with MDP-based resin

cement presented the highest bond strength in zirconia specimens.

Different failure modes were observed in this research. Cohesive failure was more predominant in groups with higher bond strength such as the silane + universal adhesive group in all types of substrates (zirconia, lithium disilicate, and indirect composite resin). However, the groups with lower bond strength primarily exhibited an adhesive type of failure.

Future in vivo research is necessary to assess the success and survival rates of indirect restorations bonded with different adhesive systems and surface conditioning methods.

Conclusions

The bond strength of cement to zirconia, lithium disilicate, and indirect composite resin restorations is influenced by the adhesive system applied. It appears that the best adhesive protocol for bonding cement to lithium disilicate, indirect composite resin, and zirconia restorations is the use of silane + a universal adhesive containing silane (Single Bond Universal).

Conflict of Interest

No conflict of interest was declared by the authors

References

- Konakanchi A, Alla RK, Guduri V. Silane Coupling Agents-Benevolent Binders in Composites. *Trends Biomater Artif Organs* 2017;31(3):108-113.
- Queiroz-Lima G, Strazzi-Sahyon HB, Maluly-Proni AT, Fagundes TC, Briso AL, Assunção WG, et al. Surface characterization of indirect restorative materials submitted to different etching protocols. *J Dent* 2022;127:104348.
- Lee HY, Han GJ, Chang J, Son HH. Bonding of the silane containing multi-mode universal adhesive for lithium disilicate ceramics. *Restor Dent Endod* 2017;42(2):95-104.
- Cuevas-Suárez CE, de Oliveira da Rosa WL, Vitti RP, da Silva AF, Piva E. Bonding strength of universal adhesives to indirect substrates: a meta-analysis of in vitro studies. *J Prosthodont* 2020;29(4):298-308.
- Klaisiri A, Krajangta N, Sriamporn T, Phumpatrakom P, Thamrongananskul N. The use of silane coupling agents on lithium disilicate glass ceramic repaired with resin composite. *J Int Dent Med Res* 2021;14(1):169-72.
- Perdigão J, Araujo E, Ramos RQ, Gomes G, Pizzolotto L. Adhesive dentistry: Current concepts and clinical considerations. *J Esthet Restor Dent* 2021;33(1):51-68.
- Jana S, Desai PD, Das D, Mazumdar P, Majumdar TK. Comparative evaluation of adhesion of glass fiber post to the root dentin after surface treatment of post and using universal bonding agent: An in vitro study. *J Conserv Dent* 2022;25(6):636-642.
- Giannini M, Vermelho PM, de Araújo Neto VG, Soto-Montero JR. An Update on Universal Adhesives: Indications and Limitations. *Curr Oral Health Rep* 2022;9:57-65.
- Isolan CP, Valente LL, Münchow EA, Basso GR, Pimentel AH, Schwantz JK, et al. Bond strength of a universal bonding agent and other contemporary dental adhesives applied on enamel, dentin, composite, and porcelain. *Appl Adhes Sci* 2014;2(1):25-35.
- Samran A, Al-Ammari A, El Bahra S, Halboub E, Wille S, Kern M. Bond strength durability of self-adhesive resin cement to zirconia ceramic: An in vitro study *J Prosthet Dent* 2019;121(3):477-484.
- Nikhil V, Singh V, Chaudhry S. Comparative evaluation of bond strength of three contemporary self-etch adhesives: An ex vivo study. *Contemp. Clin Dent* 2011;2(2):94-97.
- Furuse AY, da Cunha LF, Benetti AR et al. Bond strength of resin-resin interfaces contaminated with saliva and submitted to different surface treatments. *J Appl Oral Scien* 2007;15(6):501-505.
- Vargas MA, Bergeron C, Diaz-Arnold A. Cementing all-ceramic restorations. *J Am Dent Assoc* 2011;142(2Suppl):20S-24S.
- Lee JJ, Kang CK, Oh JW et al. Evaluation of shear bond strength between dual cure resin cement and zirconia ceramic after thermocycling treatment. *J Adv Prosth* 2015;7(1):1-7.
- Zakir M, Ashraf U, Tian T, Han A, Qiao W, Jin X, Zhang M, Tsoi JK, Matinlinna JP. The Role of Silane Coupling Agents and Universal Primers in Durable Adhesion to Dental Restorative Materials-a Review. *Curr Oral Health Rep* 2016;3:244-253.
- Baratto SS, Spina DR, Gonzaga CC, Cunha LF, Furuse AY, Baratto Filho F, Correr GM.. Silanated Surface Treatment: Effects on the Bond Strength to Lithium Disilicate Glass-Ceramic. *Braz Dent J* 2015;26(5):474-477.

17. Koko M, Takagaki T, Abdou A, Inokoshi M, Ikeda M, Wada T, et al. Effects of the ratio of silane to 10-methacryloyloxydecyl dihydrogenphosphate (MDP) in primer on bonding performance of silica-based and zirconia ceramics. *J Mech Behav Biomed Mater* 2020;112:104026.
18. Chen B, Lu Z, Meng H, Chen Y, Yang L, Zhang H, et al. Effectiveness of pre-silanization in improving bond performance of universal adhesives or self-adhesive resin cements to silica-based ceramics: Chemical and in vitro evidences. *Dent Mater* 2019;35(4):543-553.
19. Ye S, Lin JC, Kang LL, Li CL, Hou SS, Lee TL, et al. Investigations of silane-MDP interaction in universal adhesives: A ToF-SIMS analysis. *Dent Mater* 2022;38:183-93.
20. Zaghoul H, Elkassas DW, Haridy MF. Effect of incorporation of silane in the bonding agent on the repair potential of machinable esthetic blocks. *Eur J Dent* 2014;8(1):44-52.
21. Kalavacharla VK, Lawson NC, Ramp LC, Burgess JO. Influence of etching protocol and silane treatment with a universal adhesive on lithium disilicate bond strength. *Oper Dent* 2015;40(4):372-378.
22. Almaskin D, Alzaher ZA, Qaw M, Al-Thobity AM, Alshahrani A, Alsalman A, et al. The Bond Strength of a Universal Adhesive System with Silane to Lithium Disilicates in Comparison with an Isolated Silane Coupling Agent. *J Prosthodont* 2022;31(6):512-520.
23. Yao C, Zhou L, Yang H, Wang Y, Sun H, Guo J, et al. Effect of silane pretreatment on the immediate bonding of universal adhesives to computer-aided design/computer-aided manufacturing lithium disilicate glass ceramics. *Eur J Oral Sci* 2017;125(2):173-180.
24. Komine F, Kobayashi K, Saito A, Fushiki R, Koizumi H, Matsumura H. Shear bond strength between an indirect composite veneering material and zirconia ceramics after thermocycling. *J Oral Sci* 2009;51(4):629-634.
25. Zorba YO, Ilday NO, Bayındır YZ, Demirbuga S. Comparing the shear bond strength of direct and indirect composite inlays in relation to different surface conditioning and curing techniques. *Eur J Dent* 2013;7(4):436-441.
26. Fornazari IA, Wille I, Meda EM, Brum RT, Souza EM. Effect of Surface Treatment, Silane, and Universal Adhesive on Microshear Bond Strength of Nanofilled Composite Repairs. *Oper Dent* 2017;42(4):367-374.
27. Jusué-Esparza G, Rivera-Gonzaga JA, Grazioli G, Monjarás-Ávila AJ, Zamarripa-Calderón JE, Cuevas-Suárez CE. Influence of silane coupling agent and aging on the repair bond strength of dental composites. *J Adhes Sci Technol* 2022;37:1-10.
28. Valente LL, Sarkis-Onofre R, Goncalves AP, Fernandez E, Loomans B, Moraes RR. Repair bond strength of dental composites: systematic review and meta-analysis. *Int J Adhes Adhes* 2016;69:15-26.
29. Khanlar LN, Abdou A, Takagaki T, Mori S, Ikeda M, Nikaido T, et al. The effects of different silicization and silanization protocols on the bond durability of resin cements to new high-translucent zirconia. *Clin Oral Investig* 2022; 26(4):3547-3561.
30. Özcan M, Vallittu PK. Effect of surface conditioning methods on the bond strength of luting cement to ceramics. *Dent Mater* 2003;19(8):825-831.
31. Kumbuloglu O, Lassila LV, User A, Vallittu PK. Bonding of resin composite luting cements to zirconium oxide by two air-particle abrasion methods. *Oper Dent* 2006;31(2):248-255.
32. Özdemir H, Yanıkoğlu N, Sağsöz N. Effect of MDP-Based Silane and Different Surface Conditioner Methods on Bonding of Resin Cements to Zirconium Framework. *J Prosthodont* 2019; 28(1): 79-84.